

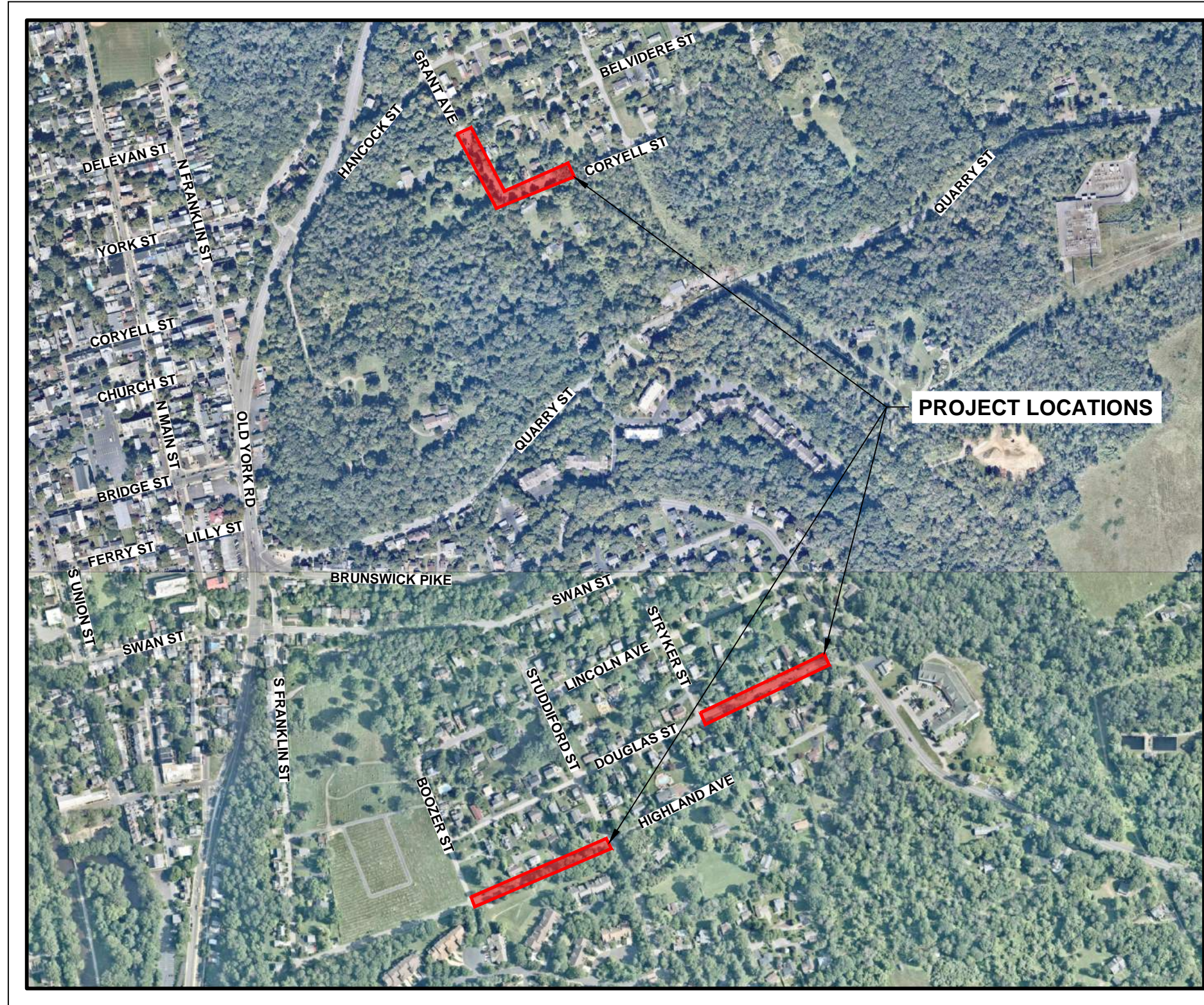
CONSTRUCTION PLANS FOR
 FY2020 NJDOT MUNICIPAL AID FUNDED GRANT
 LOCAL AID RESURFACING PROGRAM
 CITY OF LAMBERTVILLE
 COUNTY OF HUNTERDON, STATE OF NEW JERSEY

CONSTRUCTION PLANS FOR
 FY2021 NJDOT MUNICIPAL AID FUNDED GRANT
 GRANT AVENUE AND ALLEN STREET
 IMPROVEMENTS PROJECT
 CITY OF LAMBERTVILLE
 COUNTY OF HUNTERDON, STATE OF NEW JERSEY

SECTION NO.	ITEM NO.	DESCRIPTION	QUANTITY	UNIT
158	A1	INLET FILTER	3	UN
159	A2	BREAKAWAY BARRICADE	30	UN
159	A3	DRUM	30	UN
159	A4	TRAFFIC CONE	30	UN
159	A5	CONSTRUCTION SIGNS	400	SF
159	A6	TRAFFIC DIRECTOR, FLAGGER	76	HR
159	A7	UNIFORMED TRAFFIC DIRECTORS (ALLOWANCE)	1	ALLOW
160	A8	ASPHALT PRICE ADJUSTMENT	1	LS
160	A9	FUEL PRICE ADJUSTMENT	1	LS
201	A10	CLEARING SITE	1	LS
202	A11	EXCAVATION, UNCLASSIFIED (IF AND WHERE DIRECTED)	300	CY
302	A12	DENSE-GRADED AGGREGATE BASE COURSE, VARIABLE THICKNESS	392	CY
401	A13	HOT MIX ASPHALT MILLING, 3" OR LESS	1,740	SY
401	A14	HOT MIX ASPHALT 9.5M4 SURFACE COURSE, 2" THICK	220	TON
401	A15	HOT MIX ASPHALT 9.5M4 LEVING COURSE (IF AND WHERE DIRECTED)	11	TON
401	A16	HOT MIX ASPHALT 19M4 BASE COURSE, 4" THICK	440	TON
402	A17	PETROGLACIAR PAVEMENT MAT (IF AND WHERE DIRECTED)	90	SF
402	A18	RESET EXISTING INLET	2	UN
402	A19	REPAIR EXISTING INLET	1	UN
402	A20	RECONSTRUCT EXISTING INLET	0	UN
402	A21	RESET EXISTING CASTING	5	UN
402	A22	BI-CYCLE SAFE GRATE	1	UN
402	A23	CURB PRICE ECO TYPE "V"	1	UN
402	A24	REPLACE EXISTING MANHOLE CASTING AND COVER (IF AND WHERE DIRECTED)	2	UN
406	A26	HOT MIX ASPHALT DRIVEWAY, 2" THICK	114	SF
406	A28	STONE OR GRAVEL DRIVEWAY, 4" THICK (IF AND WHERE DIRECTED)	36	SF
407	A27	POINTING OF EXISTING CONCRETE CURB	15	SF
410	A28	TRAFFIC MARKING LINES, 24"	15	LF
410	A29	TRAFFIC MARKING SYMBOLS	0	SF
412	A30	REGULATORY AND WARNING SIGN	14	SF
804	A31	TOPSOIL SPREADING, 4" THICK	150	SY
806	A32	FERTILIZING AND SEEDING	150	SF
809	A33	STRAW MULCHING	150	SF

SECTION NO.	ITEM NO.	DESCRIPTION	QUANTITY	UNIT
158	AS1-1	INLET FILTER	1	UN
159	AS1-2	BREAKAWAY BARRICADE	0	UN
159	AS1-3	DRUM	0	UN
159	AS1-4	TRAFFIC CONE	0	UN
159	AS1-5	CONSTRUCTION SIGNS	0	SF
159	AS1-6	TRAFFIC DIRECTOR, FLAGGER	56	HR
159	AS1-7	UNIFORMED TRAFFIC DIRECTORS (ALLOWANCE)	1	ALLOW
160	AS1-8	ASPHALT PRICE ADJUSTMENT	0	LS
160	AS1-9	FUEL PRICE ADJUSTMENT	0	LS
201	AS1-10	CLEARING SITE	1	LS
202	AS1-11	EXCAVATION, UNCLASSIFIED (IF AND WHERE DIRECTED)	90	CY
302	AS1-12	DENSE-GRADED AGGREGATE BASE COURSE, VARIABLE THICKNESS	1,401	SF
401	AS1-13	HOT MIX ASPHALT MILLING, 3" OR LESS	1,420	SY
401	AS1-14	HOT MIX ASPHALT 9.5M4 SURFACE COURSE, 2" THICK	9	TON
401	AS1-15	HOT MIX ASPHALT 9.5M4 LEVING COURSE (IF AND WHERE DIRECTED)	126	TON
401	AS1-16	HOT MIX ASPHALT 19M4 BASE COURSE, 4" THICK	126	TON
402	AS1-17	PETROGLACIAR PAVEMENT MAT (IF AND WHERE DIRECTED)	75	SF
402	AS1-18	RESET EXISTING INLET	0	UN
402	AS1-19	REPAIR EXISTING INLET	0	UN
402	AS1-20	RECONSTRUCT EXISTING INLET	1	UN
402	AS1-21	RESET EXISTING CASTING	9	UN
402	AS1-22	BI-CYCLE SAFE GRATE	1	UN
402	AS1-23	CURB PRICE ECO TYPE "V"	1	UN
402	AS1-24	REPLACE EXISTING MANHOLE CASTING AND COVER (IF AND WHERE DIRECTED)	0	UN
406	AS1-26	HOT MIX ASPHALT DRIVEWAY, 2" THICK	12	SF
406	AS1-28	STONE OR GRAVEL DRIVEWAY, 4" THICK (IF AND WHERE DIRECTED)	30	SF
407	AS1-27	POINTING OF EXISTING CONCRETE CURB	62	SF
410	AS1-28	TRAFFIC MARKING LINES, 24"	13	LF
410	AS1-29	TRAFFIC MARKING SYMBOLS	40	SF
412	AS1-30	REGULATORY AND WARNING SIGN	0	SF
804	AS1-31	TOPSOIL SPREADING, 4" THICK	100	SY
806	AS1-32	FERTILIZING AND SEEDING	100	SF
809	AS1-33	STRAW MULCHING	100	SF

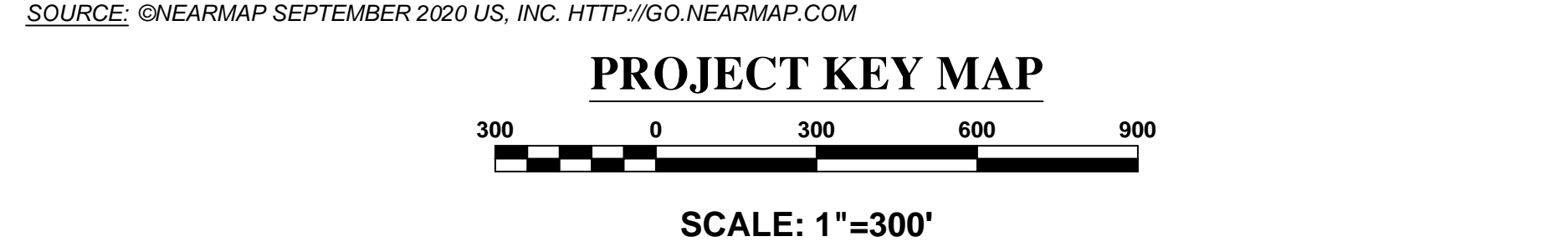
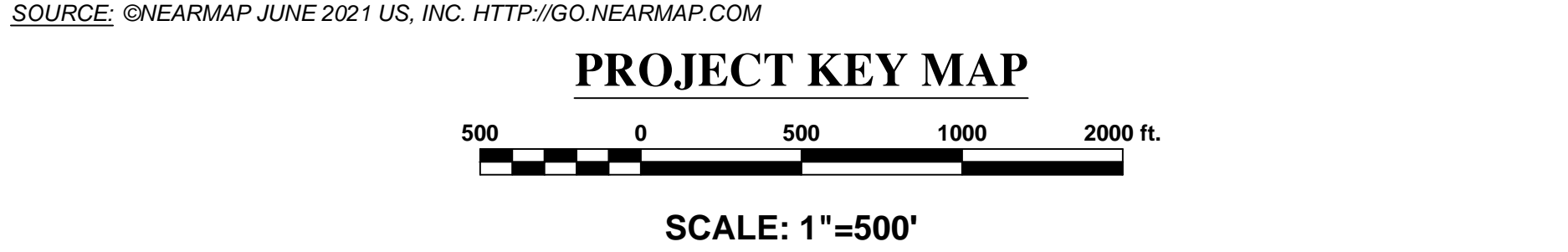
SECTION NO.	ITEM NO.	DESCRIPTION	QUANTITY	UNIT
158	AS2-1	INLET FILTER	0	UN
159	AS2-2	BREAKAWAY BARRICADE	0	UN
159	AS2-3	DRUM	0	UN
159	AS2-4	TRAFFIC CONE	0	UN
159	AS2-5	CONSTRUCTION SIGNS	0	SF
159	AS2-6	TRAFFIC DIRECTOR, FLAGGER	48	HR
159	AS2-7	UNIFORMED TRAFFIC DIRECTORS (ALLOWANCE)	1	ALLOW
160	AS2-8	ASPHALT PRICE ADJUSTMENT	0	LS
160	AS2-9	FUEL PRICE ADJUSTMENT	0	LS
201	AS2-10	CLEARING SITE	1	LS
202	AS2-11	EXCAVATION, UNCLASSIFIED (IF AND WHERE DIRECTED)	70	CY
302	AS2-12	DENSE-GRADED AGGREGATE BASE COURSE, VARIABLE THICKNESS	66	CY
401	AS2-13	HOT MIX ASPHALT MILLING, 3" OR LESS	400	SF
401	AS2-14	HOT MIX ASPHALT 9.5M4 SURFACE COURSE, 2" THICK	59	TON
401	AS2-15	HOT MIX ASPHALT 9.5M4 LEVING COURSE (IF AND WHERE DIRECTED)	3	TON
401	AS2-16	HOT MIX ASPHALT 19M4 BASE COURSE, 4" THICK	159	TON
402	AS2-17	PETROGLACIAR PAVEMENT MAT (IF AND WHERE DIRECTED)	29	SF
402	AS2-18	RESET EXISTING INLET	0	UN
402	AS2-19	REPAIR EXISTING INLET	0	UN
402	AS2-20	RECONSTRUCT EXISTING INLET	0	UN
402	AS2-21	RESET EXISTING CASTING	1	UN
402	AS2-22	BI-CYCLE SAFE GRATE	0	UN
402	AS2-23	CURB PRICE ECO TYPE "V"	0	UN
402	AS2-24	REPLACE EXISTING MANHOLE CASTING AND COVER (IF AND WHERE DIRECTED)	0	UN
406	AS2-26	HOT MIX ASPHALT DRIVEWAY, 2" THICK	0	SF
406	AS2-28	STONE OR GRAVEL DRIVEWAY, 4" THICK (IF AND WHERE DIRECTED)	48	SF
407	AS2-27	POINTING OF EXISTING CONCRETE CURB	0	SF
410	AS2-28	TRAFFIC MARKING LINES, 24"	0	LF
410	AS2-29	TRAFFIC MARKING SYMBOLS	0	SF
412	AS2-30	REGULATORY AND WARNING SIGN	0	SF
804	AS2-31	TOPSOIL SPREADING, 4" THICK	40	SY
806	AS2-32	FERTILIZING AND SEEDING	40	SF
809	AS2-33	STRAW MULCHING	40	SF



SECTION NO.	ITEM NO.	DESCRIPTION	QUANTITY	UNIT
158	B1	INLET FILTER	13	UN
159	B2	BREAKAWAY BARRICADE	20	UN
159	B3	DRUM	20	UN
159	B4	TRAFFIC CONE	20	UN
159	B5	CONSTRUCTION SIGNS	400	SF
159	B6	TRAFFIC DIRECTOR, FLAGGER	120	HR
159	B7	UNIFORMED TRAFFIC DIRECTORS (ALLOWANCE)	1	ALLOW
160	B8	ASPHALT PRICE ADJUSTMENT	1	LS
160	B9	FUEL PRICE ADJUSTMENT	1	LS
201	B10	CLEARING SITE	1	LS
202	B11	EXCAVATION, UNCLASSIFIED (IF AND WHERE DIRECTED)	15	CY
302	B12	DENSE-GRADED AGGREGATE BASE COURSE, 6" THICK	45	CY
401	B13	HOT MIX ASPHALT MILLING, 3" OR LESS	1,990	SY
401	B14	HOT MIX ASPHALT 9.5M4 SURFACE COURSE, 2" THICK	240	TON
401	B15	HOT MIX ASPHALT 9.5M4 LEVING COURSE (IF AND WHERE DIRECTED)	13	TON
401	B16	HOT MIX ASPHALT 19M4 BASE COURSE, 4" THICK	45	TON
406	B17	PETROGLACIAR PAVEMENT MAT (IF AND WHERE DIRECTED)	105	SF
402	B18	RESET EXISTING INLET	10	UN
402	B19	REPAIR EXISTING INLET	2	UN
402	B20	RECONSTRUCT EXISTING INLET	0	UN
402	B21	RESET EXISTING CASTING	2	UN
402	B22	CONCRETE VERTICAL CURB, 9"x18" (IF AND WHERE DIRECTED)	100	LF
407	B23	POINTING OF EXISTING CONCRETE CURB	74	SF
410	B24	TRAFFIC MARKING LINES, 24"	43	LF
412	B25	RELOCATED REGULATORY AND WARNING SIGN	1	UN
454	B26	UTILITY POLE RELOCATION (IF AND WHERE DIRECTED)	0	UN
804	B28	TOPSOIL SPREADING, 4" THICK	280	SY
806	B27	FERTILIZING AND SEEDING	280	SF
809	B28	STRAW MULCHING	280	SF

SECTION NO.	ITEM NO.	DESCRIPTION	QUANTITY	UNIT
158	BS1-1	INLET FILTER	2	UN
159	BS1-2	BREAKAWAY BARRICADE	0	UN
159	BS1-3	DRUM	0	UN
159	BS1-4	TRAFFIC CONE	0	UN
159	BS1-5	CONSTRUCTION SIGNS	0	SF
159	BS1-6	TRAFFIC DIRECTOR, FLAGGER	72	HR
159	BS1-7	UNIFORMED TRAFFIC DIRECTORS (ALLOWANCE)	1	ALLOW
160	BS1-8	ASPHALT PRICE ADJUSTMENT	0	LS
160	BS1-9	FUEL PRICE ADJUSTMENT	0	LS
201	BS1-10	CLEARING SITE	1	LS
202	BS1-11	EXCAVATION, UNCLASSIFIED (IF AND WHERE DIRECTED)	15	CY
302	BS1-12	DENSE-GRADED AGGREGATE BASE COURSE, 6" THICK	55	CY
401	BS1-13	HOT MIX ASPHALT MILLING, 3" OR LESS	890	SY
401	BS1-14	HOT MIX ASPHALT 9.5M4 SURFACE COURSE, 2" THICK	120	TON
401	BS1-15	HOT MIX ASPHALT 9.5M4 LEVING COURSE (IF AND WHERE DIRECTED)	4	TON
401	BS1-16	HOT MIX ASPHALT 19M4 BASE COURSE, 4" THICK	30	TON
406	BS1-17	PETROGLACIAR PAVEMENT MAT (IF AND WHERE DIRECTED)	45	SF
402	BS1-18	RESET EXISTING INLET	2	UN
402	BS1-19	REPAIR EXISTING INLET	2	UN
402	BS1-20	RECONSTRUCT EXISTING INLET	0	UN
402	BS1-21	RESET EXISTING CASTING	2	UN
402	BS1-22	CONCRETE VERTICAL CURB, 9"x18" (IF AND WHERE DIRECTED)	48	LF
407	BS1-23	POINTING OF EXISTING CONCRETE CURB	15	SF
410	BS1-24	TRAFFIC MARKING LINES, 24"	24	LF
412	BS1-25	RELOCATED REGULATORY AND WARNING SIGN	1	UN
454	BS1-26	UTILITY POLE RELOCATION (IF AND WHERE DIRECTED)	1	UN
804	BS1-28	TOPSOIL SPREADING, 4" THICK	120	SY
806	BS1-27	FERTILIZING AND SEEDING	120	SF
809	BS1-28	STRAW MULCHING	120	SF

SECTION NO.	ITEM NO.	DESCRIPTION	QUANTITY	UNIT
158	BS2-1	INLET FILTER	0	SY
159	BS2-2	BREAKAWAY BARRICADE	0	UN
159	BS2-3	DRUM	0	UN
159	BS2-4	TRAFFIC CONE	0	UN
159	BS2-5	CONSTRUCTION SIGNS	0	SF
159	BS2-6	TRAFFIC DIRECTOR, FLAGGER	48	HR
159	BS2-7	UNIFORMED TRAFFIC DIRECTORS (ALLOWANCE)	1	ALLOW
160	BS2-8	ASPHALT PRICE ADJUSTMENT	0	LS
160	BS2-9	FUEL PRICE ADJUSTMENT	0	LS
201	BS2-10	CLEARING SITE	1	LS
202	BS2-11	EXCAVATION, UNCLASSIFIED (IF AND WHERE DIRECTED)	15	CY
302	BS2-12	DENSE-GRADED AGGREGATE BASE COURSE, 6" THICK	45	CY
401	BS2-13	HOT MIX ASPHALT MILLING, 3" OR LESS	370	SY
401	BS2-14	HOT MIX ASPHALT 9.5M4 SURFACE COURSE, 2" THICK	55	TON
401	BS2-15	HOT MIX ASPHALT 9.5M4 LEVING COURSE (IF AND WHERE DIRECTED)	3	TON
401	BS2-16	HOT MIX ASPHALT 19M4 BASE COURSE, 4" THICK	100	TON
406	BS2-17	PETROGLACIAR PAVEMENT MAT (IF AND WHERE DIRECTED)	20	SF
402	BS2-18	RESET EXISTING INLET	0	UN
402	BS2-19	REPAIR EXISTING INLET	0	UN
402	BS2-20	RECONSTRUCT EXISTING INLET	0	UN
402	BS2-21	RESET EXISTING CASTING	0	UN
402	BS2-22	CONCRETE VERTICAL CURB, 9"x18" (IF AND WHERE DIRECTED)	0	LF
407	BS2-23	POINTING OF EXISTING CONCRETE CURB	0	SF
410	BS2-24	TRAFFIC MARKING LINES, 24"	0	LF
412	BS2-25	RELOCATED REGULATORY AND WARNING SIGN	0	UN
454	BS2-26	UTILITY POLE RELOCATION (IF AND WHERE DIRECTED)	0	UN
804	BS2-28	TOPSOIL SPREADING, 4" THICK	40	SY
806	BS2-27	FERTILIZING AND SEEDING	40	SF
809	BS2-28	STRAW MULCHING	40	SF



FUNDED BY
 NEW JERSEY DEPARTMENT OF TRANSPORTATION MUNICIPAL AID GRANT PROGRAM

FUNDED BY
 NEW JERSEY DEPARTMENT OF TRANSPORTATION MUNICIPAL AID GRANT PROGRAM

BID A - INDEX OF DRAWINGS

SHEET	TITLE	REV.
1	COVER SHEET	A
2	GRANT AVENUE CONSTRUCTION LAYOUT PLAN (BASE BID) AND CORYELL STREET (SUPPLEMENTAL BID #2)	A
3	HIGHLAND AVENUE CONSTRUCTION LAYOUT PLAN (SUPPLEMENTAL BID #1)	A
4	DOUGLAS STREET CONSTRUCTION LAYOUT PLAN	A
5	CONSTRUCTION DETAILS I	A
6	CONSTRUCTION DETAILS II	A
7	TRAFFIC CONTROL NOTES AND DETAILS	A

BID B - INDEX OF DRAWINGS

SHEET	TITLE	REV.
1	COVER SHEET	A
2	GRANT AVENUE CONSTRUCTION LAYOUT PLAN I STA. 0+00 TO STA. 4+00	A
3	GRANT AVENUE CONSTRUCTION LAYOUT PLAN II STA. 4+00 TO END	A
4	ALLEN STREET CONSTRUCTION LAYOUT PLAN STA. 100+00 TO END (SUPPLEMENTAL BID #1 AND #2)	A
5	CONSTRUCTION DETAILS I	A
6	CONSTRUCTION DETAILS II	A
7	TRAFFIC CONTROL NOTES AND DETAILS	A

NOTES:
 A. THE NJDOT STANDARD SPECIFICATIONS FOR ROAD AND BRIDGE CONSTRUCTION 2019, AS AMENDED BY THE SPECIAL PROVISIONS, TO GOVERN. IF IS DETERMINED THAT ANY CONFLICTS EXIST BETWEEN THE NJDOT STANDARD SPECIFICATIONS, THE TECHNICAL SPECIFICATIONS AND THE SPECIAL PROVISIONS FOR STATE AID PROJECTS, THE SPECIAL PROVISIONS FOR STATE AID PROJECTS WILL GOVERN.
 B. THE NJDOT STANDARD CONSTRUCTION DETAILS FOR ROADWAY, TRAFFIC CONTROL, AND BRIDGE BOOKLET (2016); AND THE NJDOT STANDARD ELECTRICAL DETAILS BOOKLET (2007), ARE APPLICABLE TO THIS PROJECT EXCEPT FOR THOSE DETAILS CONTAINED HEREIN.

ERIN B. ABLINE, P.E.
 NJ PROFESSIONAL ENGINEER
 LICENSE NO. 24GE05524500

ANDREW S. HOLT, PE
 NJ PROFESSIONAL ENGINEER
 LICENSE NO. 24GE03854400

COVER SHEET

SUBURBAN CONSULTING ENGINEERS, INC.
 COA NO. 24E100037300
 - Civil Engineers - Municipal Engineers -
 - Landscape Architects -
 - Planners - Environmentalists - Land Surveyors -
 96 US Highway 206, Suite 101 2430 Highway 34, Bldg. A Suite 1R
 Flemington, NJ 07836-9733 Wall, NJ 08736-7322-1776
EXCELLENCE ECONOMY ENVIRONMENT